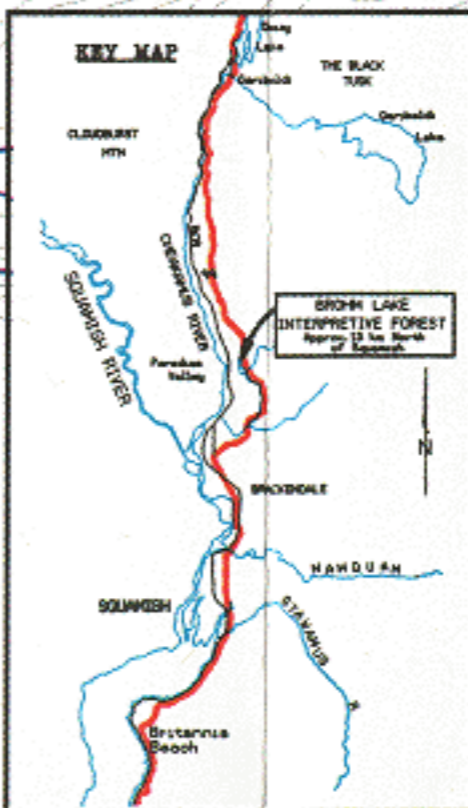
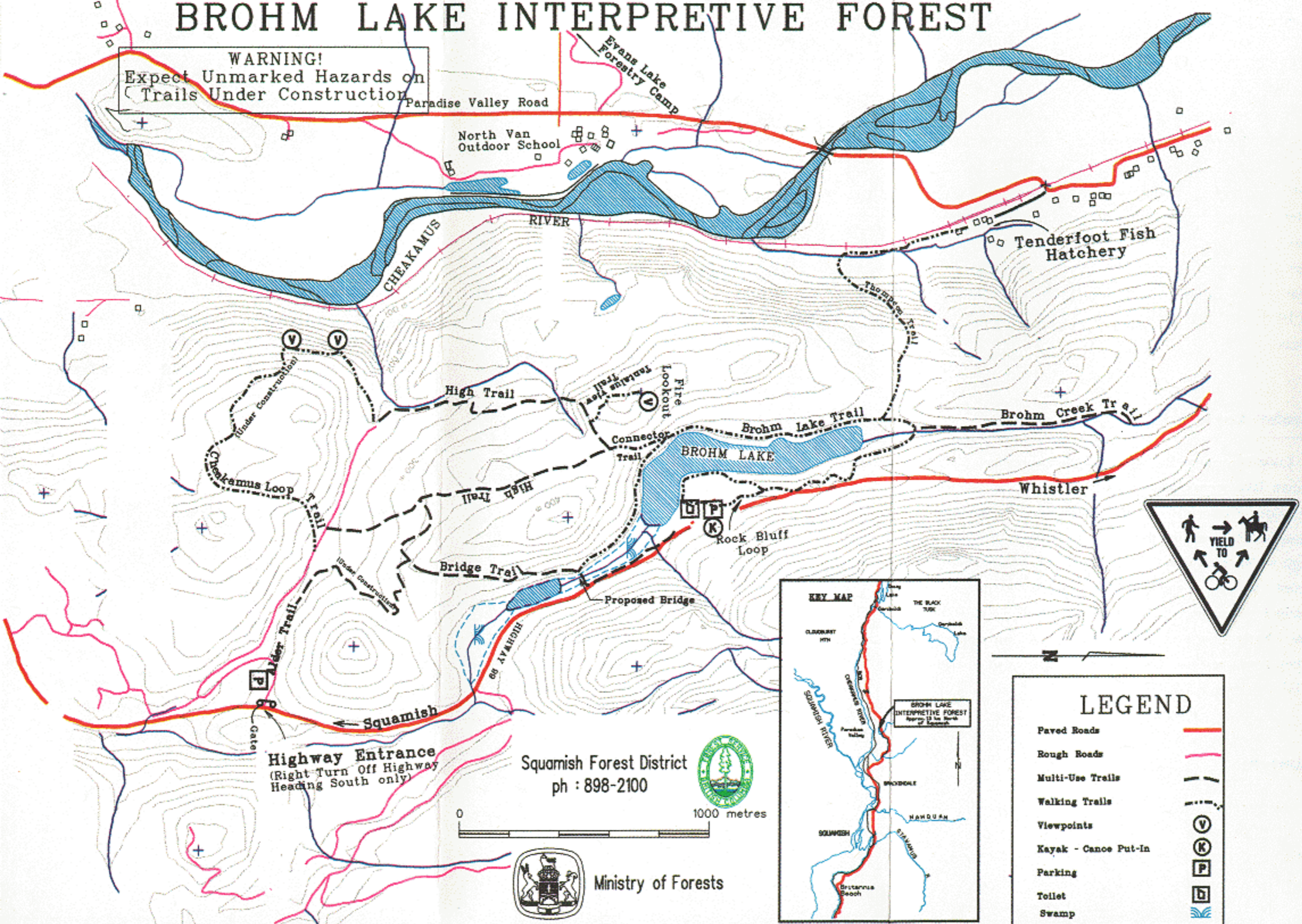


BROHM LAKE INTERPRETIVE FOREST

WARNING!
Expect Unmarked Hazards on
Trails Under Construction



LEGEND	
Paved Roads	
Rough Roads	
Multi-Use Trails	
Walking Trails	
Viewpoints	
Kayak - Canoe Put-In	
Parking	
Toilet	
Swamp	

Squamish Forest District
ph : 898-2100

0 1000 metres

